



# Glitzcamp

Glamping Tents | Safari Tents | Luxury Experience



# INTERNATIONAL GLAMPSITES



# DESIGN

## GLAMPING EXPERIENCE WITH GLITZCAMP



# DISCOVER

## GLAMPING EXPERIENCE WITH GLITZCAMP

FRIENDS



WITH KIDS



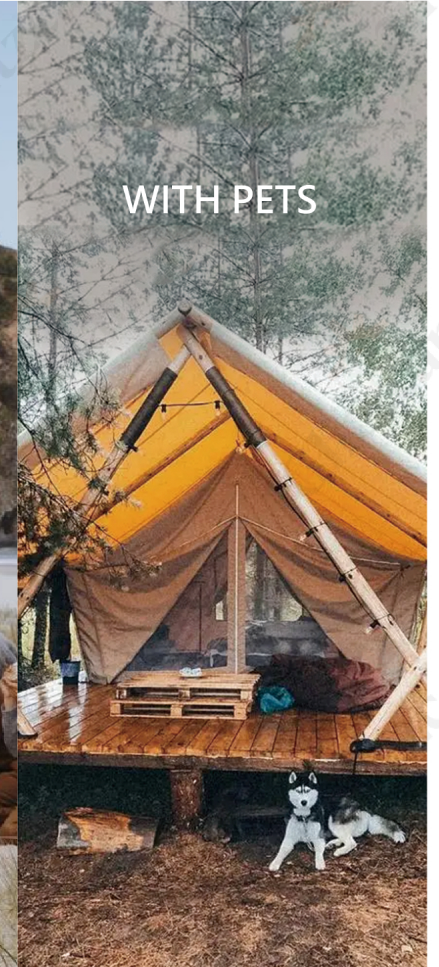
COUPLE



FAMILY



WITH PETS



# ANLONG SERIES

## GLAMPING EXPERIENCE WITH GLITZCAMP

DF



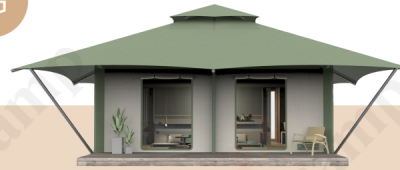
Interior Area: 32 sqm  
External Area: 58 sqm

SF



Interior Area: 62 sqm  
External Area: 116 sqm

JG



### Thai Villa Tent (Jungle)

Interior Area: 16 sqm  
External Area: 36 sqm

S1



Interior Area: 28 sqm  
External Area: 60 sqm

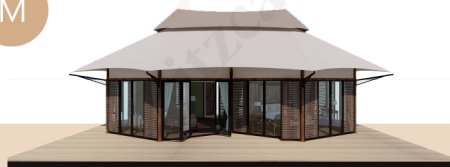
S2



### Thai Villa Tent (Karst)

Interior Area: 36 sqm  
External Area: 72 sqm

M



### Thai Villa Tent (Ensuite)

Interior Area: 56 sqm  
External Area: 116 sqm

L1



Interior Area: 84 sqm  
External Area: 172 sqm

L2



### Thai Villa Tent (Deluxe)

Interior Area: 84 sqm  
External Area: 172 sqm

# SKYLINE SERIES

## GLAMPING EXPERIENCE WITH GLITZCAMP

S100



External area: 100 sqm  
Roof height: 6.3m

S190



External area: 190 sqm  
Roof height: 7m

S190-2



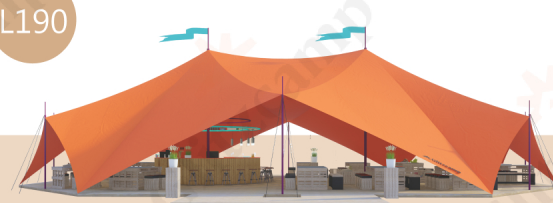
External area: 190 sqm  
Roof height: 7m

L150



External area: 150 sqm  
Roof height: 6.3m

L190



External area: 300 sqm  
Roof height: 7m

# EXTREME SERIES

## GLAMPING EXPERIENCE WITH GLITZCAMP

A40



Interior Area: 25 sqm  
External Area: 40 sqm

C40



Interior Area: 25 sqm  
External Area: 40 sqm

P40



Interior Area: 25 sqm  
External Area: 40 sqm

E67



Interior Area: 46 sqm  
External Area: 67 sqm

E48



Interior Area: 36 sqm  
External Area: 48 sqm

# LITE SERIES

## GLAMPING EXPERIENCE WITH GLITZCAMP

C15



Interior Area: 13 sqm  
External Area: 15 sqm

C18



Interior Area: 11 sqm  
External Area: 18 sqm

L17



Interior Area: 8.5 sqm  
External Area: 17 sqm

L21



Interior Area: 20 sqm  
External Area: 21 sqm

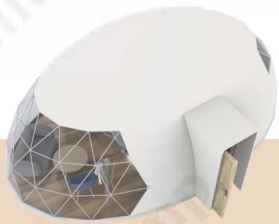
L31



Interior Area: 19 sqm  
External Area: 31 sqm

# SPECIAL DOME SERIES

## GLAMPING EXPERIENCE WITH GLITZCAMP



### Pearl Oval Dome

Interior Area: 30 sqm  
External Area: 30 sqm



### Cocoon House

Interior Area: 44 sqm  
External Area: 70 sqm



### Waterdrop Pod

Interior Area: 28 sqm  
External Area: 28 sqm

# PEAK SERIES

## GLAMPING EXPERIENCE WITH GLITZCAMP



**Mono Peak Lodge Tent**

Interior Area: 29 sqm  
External Area: 40 sqm



**Twin-Peak Lodge Tent**

Interior Area: 62 sqm  
External Area: 64 sqm



**Twin-Peak Banquet Tent**

Interior Area: 175 sqm  
External Area: 175 sqm

# FRAME



## 6063-T5 Aluminum Alloy

Aluminum alloy is the preferred framing material for luxury camping tents, striking a balance between lightness and strength.

**Lightweight:** Much lighter than steel, ensuring easy installation while maintaining strength.

**Corrosion Resistance:** Resists corrosion and doesn't rust easily.

**Strength-to-Weight Ratio:** Offers comparable strength at a reduced weight.

## Q235B Steel

Steel is frequently used for manufacturing tent connectors, such as hinges, bolts, and other fixtures.

**Strength:** Offers high strength and rigidity.

**Stability:** Provides additional stability in windy conditions or uneven terrains.

**Durability:** Undergoes special treatments to resist rust, prolonging tent lifespan.



# MATERIAL



## CANVAS

**Durability:** Canvas is robust, allowing tents to withstand significant wear and tear, ensuring longevity.

**Breathability:** Naturally woven canvas offers excellent ventilation, keeping the interior cool during hot weather.

**Water Resistance:** Special coating processes enhance water-resistant capabilities. When exposed to water, the fibers expand, preventing rainwater from seeping in.

**Eco-friendliness:** Prioritizing renewable natural resources ensures products are free from chemical pollutants and environmentally friendly.

## OXFORD FABRIC

**Cost-Effectiveness:** Delivers excellent performance at a more economical price.

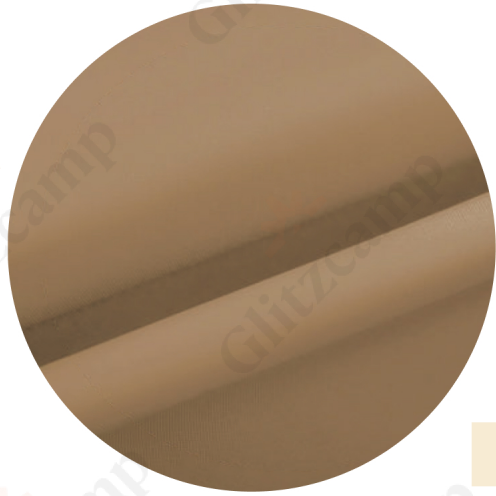
**Water Resistance:** Coated for water resistance, preventing moisture during rainy days.

**Lightweight:** Sturdy yet light, making tents easy to carry and set up.

**Ease of Cleaning:** A smooth surface allows for easy cleaning.



# MATERIAL



## NYLON

**Durability:** Nylon offers great resistance to potential tent tears and wear.

**Elasticity:** Maintains tent shape and resists deformation.

**Water Resistance:** Low water absorption ensures quick drying. Specialized coatings further enhance water resistance.

**Wear Resistance:** Used in joints and areas prone to wear, boosting the tent's overall durability.

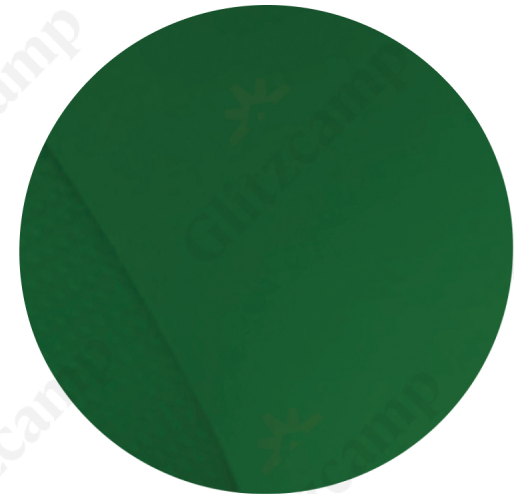
## POLYVINYL CHLORIDE FABRIC

**Water Resistance:** Entirely waterproof, ideal for rainy or humid conditions.

**Weather Resistance:** Resists UV rays, wind, and other harsh conditions.

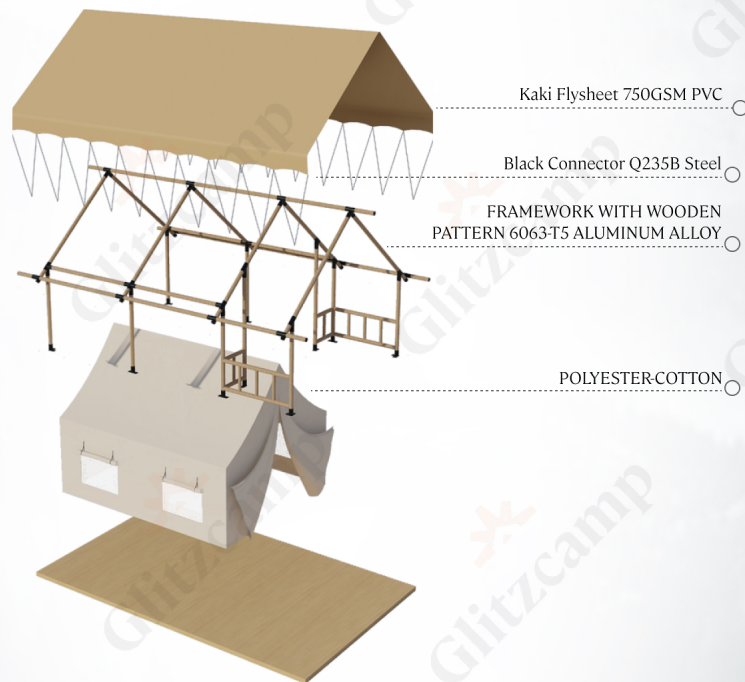
**Wear Resistance:** Incredibly sturdy, resisting friction and wear.

**Ease of Cleaning:** Smooth surface simplifies tent maintenance.



# SAFARI EXTREME

Safari Extreme tents are constructed with premium aluminum alloys, creating a solid structure that withstands high winds, snow, etc. The overall life cycle can reach 15 years with a 1 - year warranty. Safari Extreme can be rapidly deployed in diverse locations with an intuitive setup process, from conventional campsites to sparse areas with minimal facilities. In addition, it provides exceptional comfort to campers in a variety of outdoor environments with its inner tent, flooring, and interior decorations.



Aluminum Framework with Wooden Pattern



Corrosion-resistant Painted Steel



Double Flysheet



Anti-slip Buckle



Double Curtain

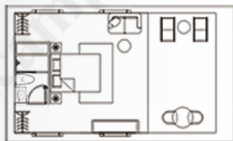


Reinforcement Tightening

# SAFARI EXTREME

## A40

(TWO TYPES OF LAYOUT)



■ **Interior**

Length: 5.2m      Edge Height: 2.1m  
 Width: 4.8m      Total Height: 4.1m  
 Area: 25.0 sqm

■ **External**

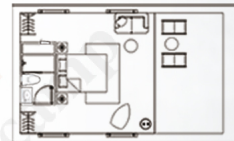
Length: 8.0m      Edge Height: 2.0m  
 Width: 5.0m      Total Height: 4.3m  
 Area: 40.0 sqm

■ **Product**

Packed Weight: 450.0kg  
 Packed Size: 2.3cbm

## C40

(TWO TYPES OF LAYOUT)



■ **Interior**

Length: 5.2m      Edge Height: 2.1m  
 Width: 4.8m      Total Height: 3.1m  
 Area: 25.0 sqm

■ **External**

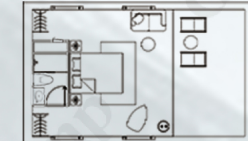
Length: 8.0m      Edge Height: 2.2m  
 Width: 5.0m      Total Height: 4.0m  
 Area: 40.0 sqm

■ **Product**

Packed Weight: 443.0kg  
 Packed Size: 3.6cbm

## P40

(TWO TYPES OF LAYOUT)



■ **Interior**

Length: 5.3m      Edge Height: 2.1m  
 Width: 4.8m      Total Height: 3.0m  
 Area: 25 sqm

■ **External**

Length: 8.0m      Edge Height: 2.1m  
 Width: 5.0m      Total Height: 4.0m  
 Area: 40.0 sqm

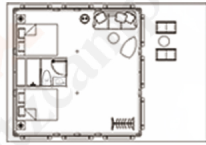
■ **Product**

Packed Weight: 764.3kg  
 Packed Size: 5.7cbm

# SAFARI EXTREME

## E 48

(TWO TYPES OF LAYOUT)



### ■ Interior

Length: 7.0m    Edge Height: 2.2m  
 Width: 7.0m    Total Height: 4.3m  
 Area: 49 sqm

### ■ External

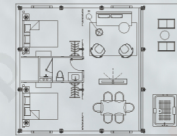
Length: 6.9m    Edge Height: 2.2m  
 Width: 6.9m    Total Height: 4.55m  
 Area: 47.6 sqm

### ■ Product

Packed Weight: 800kg  
 Packed Size: 7.0cbm

## E 67

(TWO TYPES OF LAYOUT)



### ■ Interior

Length: 7.0m    Edge Height: 2.2m  
 Width: 7.0m    Total Height: 4.3m  
 Area: 49 sqm

### ■ External

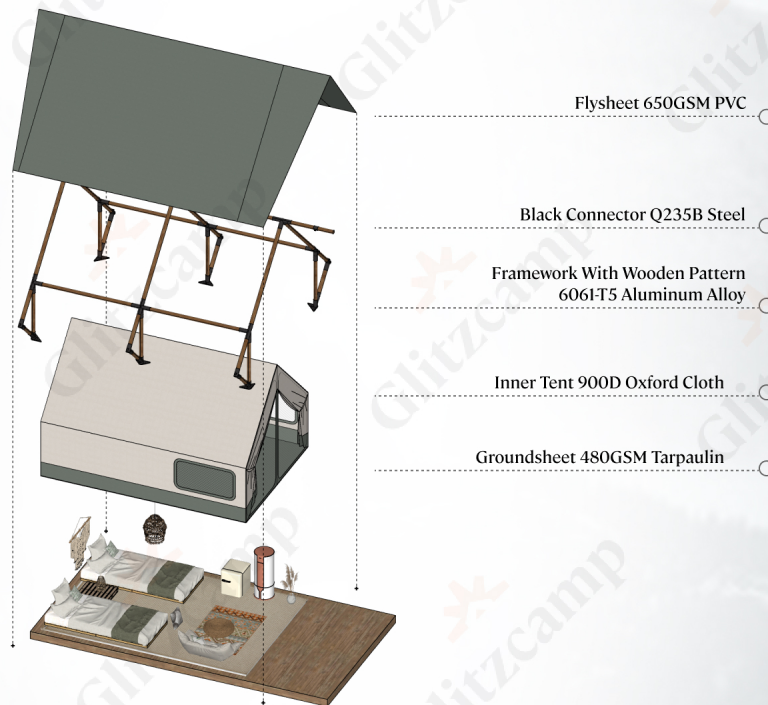
Length: 6.9m    Edge Height: 2.2m  
 Width: 9.21m    Total Height: 4.55m  
 Area: 63.5 sqm

### ■ Product

Packed Weight: 1300kg  
 Packed Size: 10.62cbm

# SAFARI LITE

Safari Lite is the premium glamping tent created by Glitzcamp to address operational issues with traditional camping tents. Compared to regular camping tents, Safari Lite has a longer lifetime, lower operating and maintenance costs, greater durability, and provides a superior living experience. The overall lifecycle can reach 3-5 years with a 1-year warranty. The modular design allows for easy repairs and part replacements.



Solid Aluminum Frame



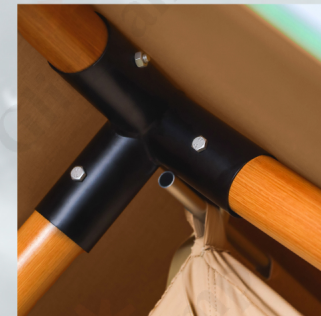
Anti-slip Buckle



Double Curtain



Double Flysheet



Black Paint Connector

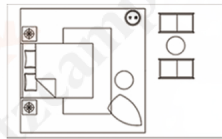


Ratchet Strap Tensioner

# SAFARI LITE

## C15

(TWO TYPES OF LAYOUT)



### ■ Interior

Length: 4.1m      Total Height: 2.5m  
Width: 3.3m      Area: 13.5 sqm

### ■ External

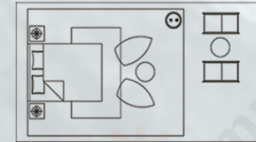
Length: 4.2m      Total Height: 2.8m  
Width: 3.5m      Area: 14.7 sqm

### ■ Product

Packed Weight: 191.8kg  
Packed Size: 2.0cbm

## C18

(TWO TYPES OF LAYOUT)



### ■ Interior

Length: 3.3m      Edge Height: 0.5m  
Width: 3.3m      Total Height: 3.0m  
Area: 10.9 sqm

### ■ External

Length: 5.0m      Edge Height: 0.5m  
Width: 3.5m      Total Height: 3.2m  
Area: 17.5 sqm

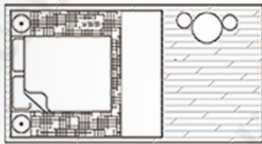
### ■ Product

Packed Weight: 228.1kg  
Packed Size: 2.4cbm

# SAFARI LITE

## L17

(TWO TYPES OF LAYOUT)



■ **Interior**

Length: 3.0m      Edge Height: 1.1m  
 Width: 2.5m      Total Height: 2.4m  
 Area: 7.5 sqm

■ **External**

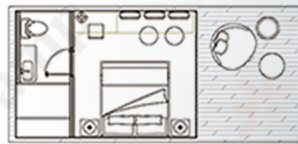
Length: 3.1m      Edge Height: 0.6m  
 Width: 2.7m      Total Height: 2.6m  
 Area: 8.4 sqm

■ **Product**

Packed Weight: 149.0kg  
 Packed Size: 1.2cbm

## L31

(TWO TYPES OF LAYOUT)



■ **Interior**

Length: 5.0m      Edge Height: 1.1m  
 Width: 3.5m      Total Height: 2.9m  
 Area: 17.5 sqm

■ **External**

Length: 5.1m      Edge Height: 0.6m  
 Width: 3.7m      Total Height: 3.1m  
 Area: 18.9 sqm

■ **Product**

Packed Weight: 270.1kg  
 Packed Size: 1.6cbm

## L21

(TWO TYPES OF LAYOUT)



■ **Interior**

Length: 4.5m      Edge Height: 0.9m  
 Width: 4.5m      Total Height: 2.8m  
 Area: 17.6 sqm

■ **External**

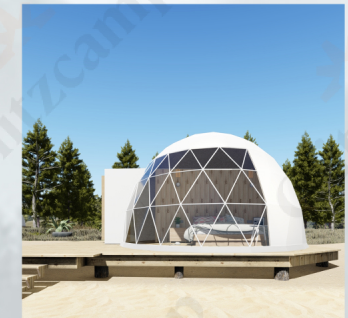
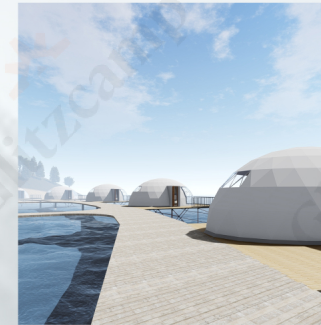
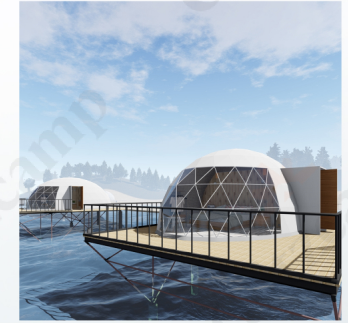
Length: 5.8m      Edge Height: 0.9m  
 Width: 4.6m      Total Height: 2.9m  
 Area: 19.9 sqm

■ **Product**

Packed Weight: 257.3kg  
 Packed Size: 1.9cbm

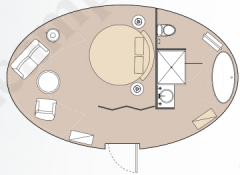
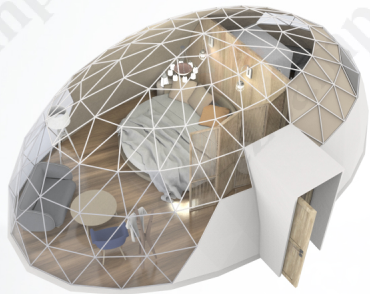
# SPECIAL DOME

The Special Dome is a new line from Glitzcamp, developed as an upgrade to our classic dome tents. It's designed for people who want a balance of unique style and practical function. While keeping the iconic look and open space of a dome, it adds flexible design options and smart features for different uses. Whether it's for a vacation retreat, a signature glamping site, or a custom project, the Special Dome offers a one-of-a-kind space that's both beautiful and functional.



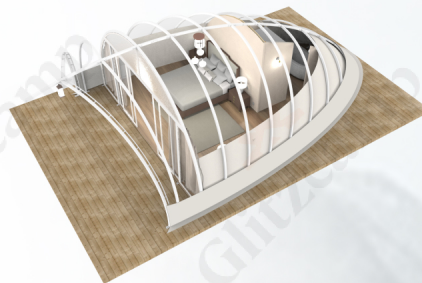
# SPECIAL DOME

## Pearl Oval Dome



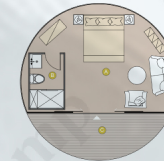
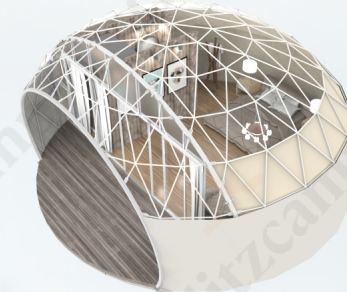
<ul style="list-style-type: none"> <li>■ <b>Interior</b></li> </ul>	<p>Length: 8.0m Width: 5.0m Area: 30.0 sqm</p>	<p>Edge Height: / Total Height: 3.0m</p>
<ul style="list-style-type: none"> <li>■ <b>External</b></li> </ul>	<p>Length: 8.0m Width: 5.0m Area: 30.0 sqm</p>	<p>Edge Height: / Total Height: 3.0m</p>
<ul style="list-style-type: none"> <li>■ <b>Product</b></li> </ul>	<p>Packed Weight: 700.0kg Packed Size: 5.0cbm</p>	

## Cocoon House



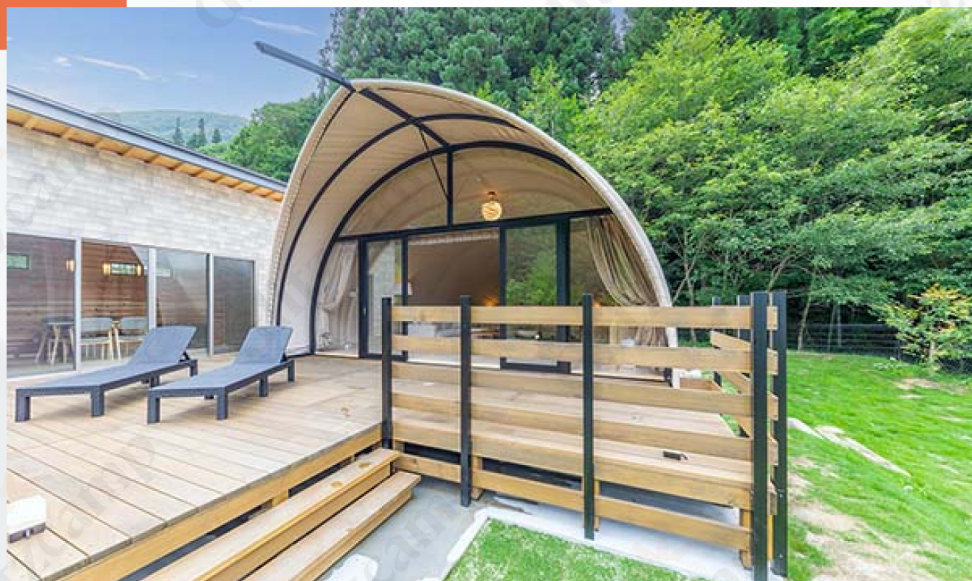
<ul style="list-style-type: none"> <li>■ <b>Interior</b></li> </ul>	<p>Length: 10.7m Width: 6.5m Area: 44.0 sqm</p>	<p>Edge Height: / Total Height: 3.7m</p>
<ul style="list-style-type: none"> <li>■ <b>External</b></li> </ul>	<p>Length: 10.7m Width: 6.5m Area: 70.0 sqm</p>	<p>Edge Height: / Total Height: 3.7m</p>
<ul style="list-style-type: none"> <li>■ <b>Product</b></li> </ul>	<p>Packed Weight: 1500.0kg Packed Size: 7.0cbm</p>	

## Waterdrop Pod



<ul style="list-style-type: none"> <li>■ <b>Interior</b></li> </ul>	<p>Length: 7.0m Width: 7.0m Area: 28.0 sqm</p>	<p>Edge Height: / Total Height: 3.2m</p>
<ul style="list-style-type: none"> <li>■ <b>External</b></li> </ul>	<p>Length: 8.0m Width: 5.0m Area: 28.0 sqm</p>	<p>Edge Height: 2.1m Total Height: 4.0m</p>
<ul style="list-style-type: none"> <li>■ <b>Product</b></li> </ul>	<p>Packed Weight: 1300.0kg Packed Size: 7.0cbm</p>	

# CASE DISPLAY



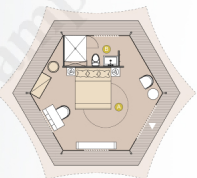
# PEAK SERIES

The Peak Series is a luxury lodge collection built with a strong steel frame and tensile membrane. Its farmhouse-inspired style and column-free interior maximize space and comfort. Available in different sizes, it can be customized with bedrooms, lounges, or entertainment areas-ideal for both family retreats and large gatherings.



# PEAK SERIES

## Mono Peak Lodge Tent



### ■ Interior

Length: 3.35m    Edge Height: 2.1m  
 Width: 3.35m    Total Height: 5.6m  
 Area: 29.0 sqm

### ■ External

Length: 3.35m    Edge Height: 2.1m  
 Width: 3.35m    Total Height: 5.6m  
 Area: 40.0 sqm

### ■ Product

Packed Weight: 650.0kg  
 Packed Size: 3.5cbm

## Twin-Peak Lodge Tent



### ■ Interior

Length: 6.0m    Edge Height: 2.1m  
 Width: 3.5m    Total Height: 5.6m  
 Area: 62.0 sqm

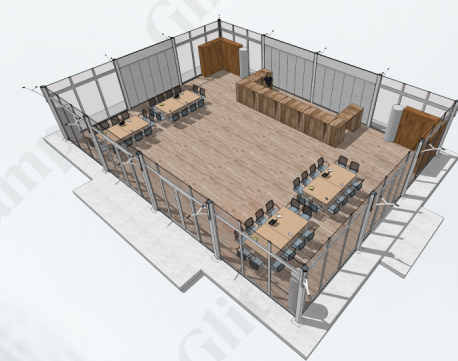
### ■ External

Length: 6.0m    Edge Height: 2.1m  
 Width: 3.5m    Total Height: 5.6m  
 Area: 64.0 sqm

### ■ Product

Packed Weight: 1600.0kg  
 Packed Size: 10.0cbm

## Twin-Peak Banquet Tent



### ■ Interior

Length: 15.28m    Edge Height: 2.7m  
 Width: 11.46m    Total Height: 6.7m  
 Area: 175.0 sqm

### ■ External

Length: 15.28m    Edge Height: 2.7m  
 Width: 11.46m    Total Height: 6.7m  
 Area: 175.0 sqm

### ■ Product

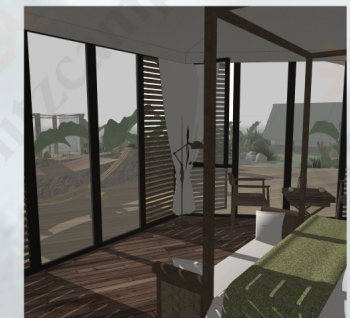
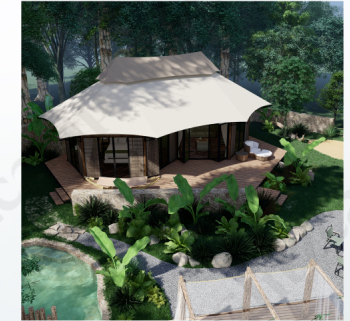
Packed Weight: 5000.0kg  
 Packed Size: 24.0cbm

# CASE DISPLAY



# ANLONG SERIES

The Anlong Series is part of Glitzcamp's luxury lodging collections, created to meet a wide range of refined accommodation needs. Designed with both style and function in mind, it offers flexible structures that adapt to different settings, from private retreats to high-end resorts. With its elegant design and practical layouts, the Anlong Series provides a comfortable and premium stay experience for every guest.



# ANLONG SERIES

## Thai Villa Tent (Jungle)



### ■ Interior

Length: 4.2m      Edge Height: 2.6m  
 Width: 4.2m      Total Height: 5.0m  
 Area: 16.0 sqm

### ■ External

Length: 4.2m      Edge Height: 2.6m  
 Width: 4.2m      Total Height: 5.0m  
 Area: 36.0 sqm

### ■ Product

Packed Weight: 700.0kg  
 Packed Size: 4.0cbm

## Thai Villa Tent (Karst)



### ■ Interior

Length: 7.5m      Edge Height: /  
 Width: 7.0m      Total Height: 6.3m  
 Area: 44.0 sqm

### ■ External

Length: 7.5m      Edge Height: /  
 Width: 7.0m      Total Height: 6.3m  
 Area: 47.0 sqm

### ■ Product

Packed Weight: 3500.0kg  
 Packed Size: 12cbm

# ANLONG SERIES

## Thai Villa Tent (Ensuite)



### ■ Interior

Length: 13.0m    Edge Height: /  
Width: 7.5m    Total Height: 6.5m  
Area: 56.0 sqm

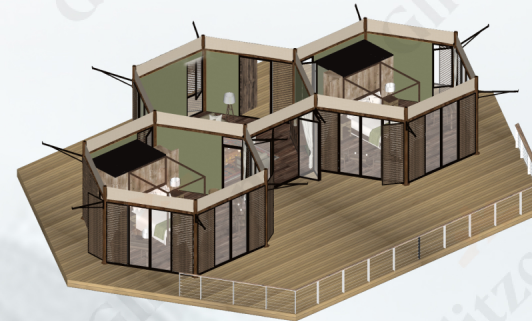
### ■ External

Length: 13.0m    Edge Height: /  
Width: 7.5m    Total Height: 6.5m  
Area: 116.0 sqm

### ■ Product

Packed Weight: 5300.0kg  
Packed Size: 15cbm

## Thai Villa Tent (Deluxe)



### ■ Interior

Length: 18.7m    Edge Height: /  
Width: 9.7m    Total Height: 6.5m  
Area: 84.0 sqm

### ■ External

Length: 18.7m    Edge Height: /  
Width: 9.7m    Total Height: 6.5m  
Area: 172.0 sqm

### ■ Product

Packed Weight: 8500.0kg  
Packed Size: 20cbm

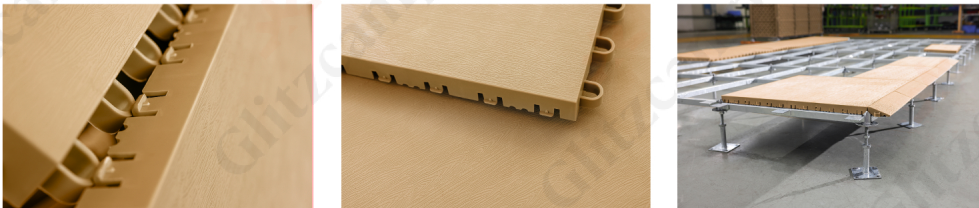
# CASE DISPLAY



# MODULAR DECK

Constructed from high-intensity Polypropylene (PP), our modular deck is the unsung hero that stands strong against water, mold, and mildew. Whether in interlocking or roll form, it's the reliable foundation your glamping experience deserves.

One of the key benefits of the flooring is that it provides a stable surface for the glamping tent, which can protect the tent from being damaged. Additionally, the flooring can keep the tent clean and dry, which creates a more comfortable and enjoyable glamping experience.



Build a Deck  
in Hours



Minimal Tools  
Required



Easy Start  
to ROI



Low  
Maintenance



Increase Your  
Dome's Value

# MODULAR BATHROOM POD

Modular bathrooms are revolutionizing the glamping industry by redefining the guest experience. Unlike traditional construction, modular bathrooms are independent and can be built in a short time. It is easy to install, so it saves a lot of time and costs in terms of labor and construction.

The modern design adds a touch of sophistication to the glamping experience. It also provides a luxurious and comfortable feeling for the guests. It is also customizable, allowing operators to choose from a variety of styles, colors, and materials to fit their specific branding and aesthetic requirements.



# KEY BENEFITS



## WIDE SELECTION

Complete range of shell solutions.

---

## INNOVATIVE SOLUTION

Experience from glamping business, unique dry-wet separation system.

---

## FLEXIBILITY

Integrated design, easy and fast onsite installation.

---

## SIMPLICITY OF REALIZATION AND SELF-CONTAINED

Lower cost of running the glamping site complex.

---

## TIMES OPTIMIZATION

Reduction of onsite labors, cost-effective.

---

## ELEVATION IN THE GLAMPING INDUSTRY

In-depth understanding of the industry's end-users, listening to the real needs of the market, comprehensive and proactive coordination of the supply chain, professional design, and construction with complete qualifications.

# SOLAR ENERGY

## Eco-Friendly Adventures

Why leave a carbon footprint when you can tread lightly? Our Solar System is a nod to sustainability. Enjoy the great outdoors knowing you're doing your bit for Mother Earth. It's like giving back to nature, one glamping trip at a time.

## Durability in Every Weather

Rain dance or sunbathing, our Solar System stands by you. Crafted to endure, it promises to shine, come rain or shine. Think of it as your trusty sidekick, always ready for an adventure.

## Why Choose Our Solar System?

Because it's the bridge between luxury and nature. It's not just a product; it's an experience. An experience of illuminated nights, powered adventures and sustainable living.

## The Future of Glamping

The future is bright, and it's powered by our Solar System. Step into a new era of glamping, where luxury meets sustainability.

## ALL-IN-ONE ENERGY STORAGE SYSTEM



## STACKED BATTERY STORAGE SYSTEM



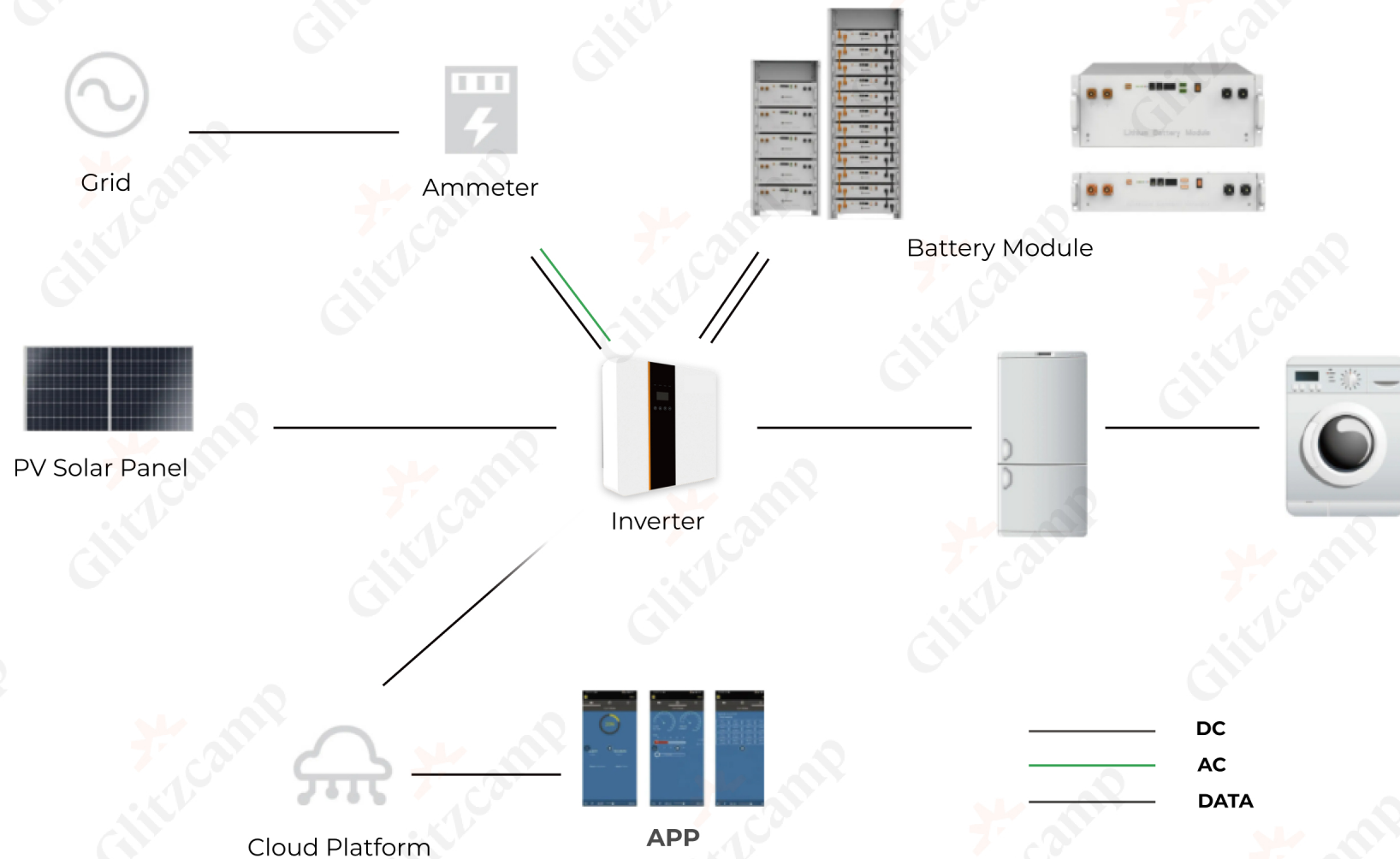
## SOLAR INVERTER



## SOLAR PANELS



# SCHEMATIC DIAGRAM



# WHERE EXCEPTIONAL JOURNEY

SPRING



SUMMER



AUTUMN



WINTER



## BEGIN WITH GLITZCAMP

# Our Belief »

Tailor Made Solutions Make Space Valuable



## Shelter structures



**Shelter Structures** is dedicated to providing globally leading outdoor space solutions, mainly producing high-quality temporary and semi-permanent modular tent systems, widely used in various outdoor festivals, commercial events, sports venues, industrial storage, military, and disaster relief areas.



## Glitzcamp



**Glitzcamp**, specializing in outdoor tents and holiday homes manufacturing, mainly serving tourism real estate, RV camps, cultural and tourism towns, etc. We are capable of meeting personalized customization needs and providing efficient and beneficial tourism housing solutions.



## Shelter Dome



**Shelter Dome** focused on offering high-quality outdoor living solutions, combining comfort, functionality, and eye-catching exterior design in one, exploring the luxury star tents of fashion trends. Its unique shape and strong adaptability have made it the go-to choice for exquisite camping, unique hotel development, and luxury camping.

## Endorsement from Professional Industry Organizations



Many famous industry organizations endorse **Shelter Architecture Technology (Guangdong) Co., Ltd.** by trusting our technology and production quality and giving high recommendations for our products.



## Brands we work with

**Shelter Architecture Technology (Guangdong) Co., Ltd.** is dedicated to offering top-tier outdoor space solutions worldwide. With our expertise and commitment, we provide unique, robust and adaptable solutions that enhance user experiences across diverse applications.



# THANK YOU FOR YOUR PATIENCE

Showroom & Head office

Guangzhou, China

+86-139-2885-8552

+1 713 386 9281

[admin@shelter-structures.com](mailto:admin@shelter-structures.com)

[www.glitzcamp.com](http://www.glitzcamp.com)

